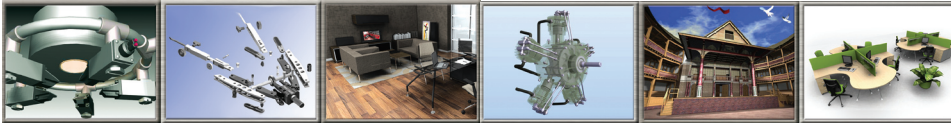




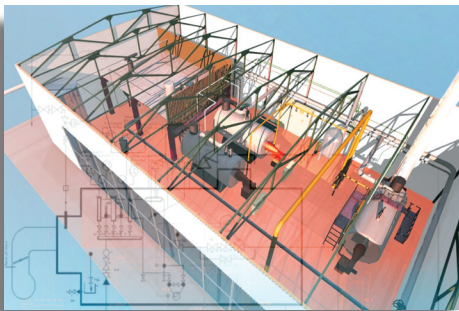
TurboCAD[®] 16 Pro



Power. Precision. Performance.

Hyper-productivity. Dramatic Results

TurboCAD[®] Pro 16 is the premium design software solution that's delivered exceptional value to both 2D and 3D users for over twenty years. Its complete 2D drafting and 3D surface and solid modeling toolsets include many of the most advanced technologies in the industry - ACIS[®] solid modeling, D-Cubed constraints, and Lightworks[®] photorealistic rendering. The powerful Drafting Palette accelerates all levels of the design and detailing process while expert tools for architectural and mechanical design provide greater productivity. Plus, TurboCAD offers superior interoperability with new Database Connect options, XREF support; as well as extraordinary file sharing compatibility with nearly 40 industry standard formats, including AutoCAD[®] (.DWG) and Google[™] SketchUp[™] (.SKP).



DRAFTING & DETAILING

IMPROVED - Drafting Palette

Dynamic Viewports

NEW - XREF Manager

2D Geometric & Dimensional Constraints

IMPROVED - Smart, Quick & Baseline Dimensions

IMPROVED - Associative Dimensions

Handle-based Editing

Parametric Parts, Blocks & Symbols

AutoCAD[®] Style Block Attributes

Hatches, Patterns & Line Styles

Over 40 Line, Arc, Curve & Spline Tools

Over 50 Editing & Modification Tools

Snaps & Drawing Aids

Customizable Desktop

Context Sensitive Help

MECHANICAL

NEW - ACIS[®]18 Modeling Engine

NEW - Quick Pull Tool

NEW - Solid Body Tie Feature for Dimensions

NEW - Helix Tool

IMPROVED - 2D/3D Boolean Operations

IMPROVED - Extrude, Revolve, Sweep

IMPROVED - Offset Tool

Facet & Edge Modifiers

Extrusion & Lofts of Compound Profiles

Face to Face & Branch Lofting

Section & Slice

Profile Editing

Assembly Tools

Part Tree

ARCHITECTURAL

Intelligent, Self-healing Walls

Convert to Wall Tool

Parametric Stair, Rails & Slab Tools

Join/Split/Modify/Dimension Walls

IMPROVED - Parametric Doors, Windows & Stairs

Intelligent Roofs

Terrain Tools

AEC Styles

LIGHTING & RENDERING

NEW - LightWorks[®] 7.9 Rendering Engine

Ray Trace/Radiosity & Open GL Rendering

IMPROVED - Customizable Materials with Scaling

500 Materials Included (140 Eco-friendly)

NEW - Materials to Facet

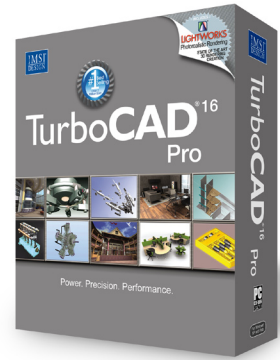
Customizable Luminance & Environments

LightWorks[®] Archive Library Support

NEW - Render Style Editor

NEW - Photorealistic Render Styles

NEW - Non-realistic Render Styles (mosaic, etc.)



Top 5 Reasons TurboCAD is #1

- 1 Affordable CAD - More professional features per dollar than any other 2D/3D CAD application sold.
- 2 Easy to Learn & Use - Beginner, intermediate, and advanced menu settings with context sensitive help in a familiar Windows[®] style interface helps you get results fast!
- 3 Complete 2D Drafting & 3D Modeling in One Application - Packed with 2D drawing, modifying, and dimensioning tools, plus 3D modeling, photorealistic rendering, advanced lighting effects, transparency options, camera views, and more!
- 4 CAD & Graphic Compatibility - Supports 28 of the most popular industry-standard file formats including AutoCAD[®] & Google[™] SketchUp[™] files, save to PDF, and more!
- 5 Proven CAD Solution for Over 22 Years Year after year, the industry's most versatile and consumer friendly CAD application.

System Requirements

In order to run TurboCAD[®] Pro 16 your system should include the following:

- Microsoft[®] Windows[®] 2000 (SP4), XP (SP2) or Vista
- 500Mhz or higher processor
- 750 MB free hard drive space
- 512MB RAM Windows[®] 2000 & XP, 1 GB RAM Vista
- DVD-ROM drive
- Video Card with OpenGL driver and 64MB RAM
- Color monitor with 1024x768 resolution or higher
- Windows-compatible mouse
- Microsoft[®] Internet Explorer 5.5 or higher, Mozilla Firefox[®] to access online features (Optional)

Part No. 07TCP516



IMSI/Design
25 Leveroni Ct, Ste B
Novato, CA 94949
Phone: 415.483.8000
Fax: 415.884.9023
www.IMSIDesign.com

For Windows[®]
XP and Vista

